





3



1



1

- Semi Detached Home
- Three Bedrooms
- Excellent Amenities Nearby
- Council Tax Band *A*
- Call For More Information
- Corner Plot
- Wrap Around Gardens
- Freehold
- Viewing Recommended
- Video Tour Available





** Video Tour on our YouTube Channel | <https://youtu.be/TjDUCmdELZU>
**

Welcome to the market this three-bedroom, semi-detached family home, positioned on a fantastic corner plot in the popular Bodmin Way, Fawdon.

The location is close to a wealth of amenities. The nearby Fawdon Metro Station is within walking distance, providing quick and direct access to Newcastle city centre and surrounding areas. For added convenience, Gosforth High Street is easily accessible, boasting a variety of shops, cafes, and services. Excellent public transport links also connect you to the A1 motorway and the popular Kingston Park Retail Park, making travel and shopping effortless. There are also good schools in the area.

Briefly comprising to the ground floor: - entrance leading into the spacious kitchen dining room with fitted Shaker-style wall and floor units providing ample storage, and integrated oven and hob, and a generous lounge spanning the depth of the property, with French doors to the garden. On the first floor, there are three good-sized bedrooms and there is a contemporary family bathroom WC with a double ended bathtub and overhead shower. The property further benefits from gas central heating and double glazing.

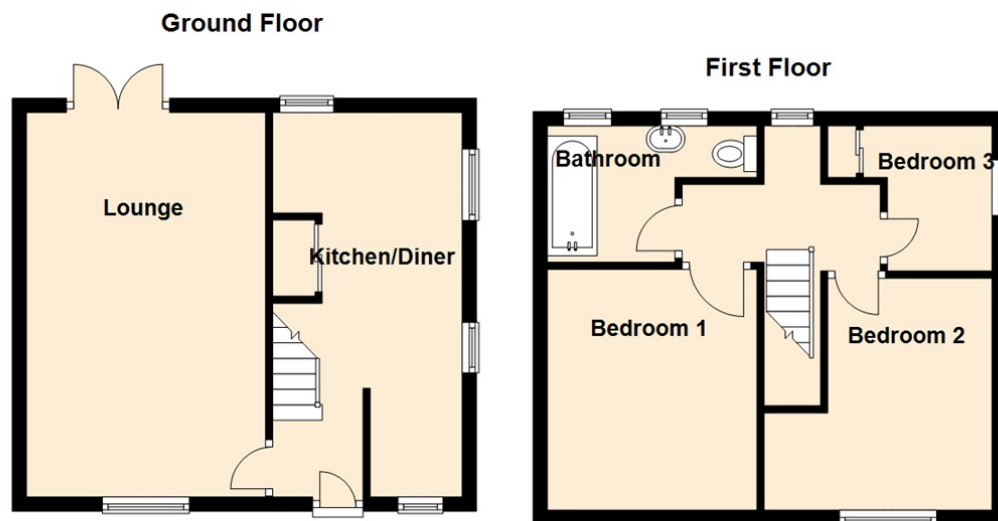
Externally, there are well stocked, wrap around gardens, a perfect space for relaxing or entertaining during those long summer nights.

We anticipate an extremely high level of viewings on this beautiful family home. To arrange yours please call our sales team on 0191 236 2070.

Tenure

The agent understands the property to be Freehold. However, this should be confirmed with a licenced legal representative.

Council Tax Band *A*



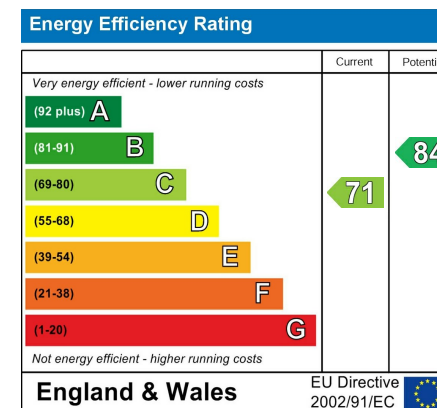
Lounge 17'8" x 10'9" (5.40 x 3.30)

Kitchen 10'0" x 17'11" (3.05 x 5.48)

Bedroom One 12'1" x 11'1" (3.70 x 3.40)

Bedroom Two 9'10" x 8'10" (3.00 x 2.70)

Bedroom Three 7'2" x 8'10" (2.19 x 2.70)



The difference between house and home

You may download, store and use the material for your own personal use and research. You may not republish, retransmit, redistribute or otherwise make the material available to any party or make the same available on any website, online service or bulletin board of your own or of any other party or make the same available in hard copy or in any other media without the website owner's express prior written consent. The website owner's copyright must remain on all reproductions of material taken from this website.



www.janforsterestates.com

Gosforth
High Heaton
Tynemouth
Property Management Centre

0191 236 2070
0191 270 1122
0191 257 2000
0191 236 2680

